

Magnetic level gauge PN 40/CL 300

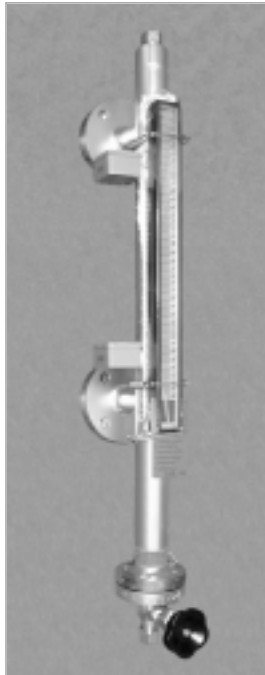
Magnetic indicating bar scale with fine resolution, indirect level indication
Fully closed housing with gapless weldings and butt-welded connections
Float magnet field totally circular with strong far field
Float defect control with indicating field in lower display end

Product group **710**

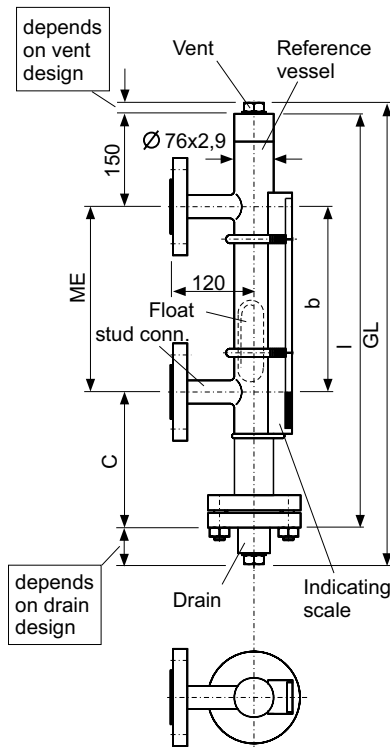
Type **110.0**

Sheet: 1/2 Revision: 3

Date: 09/03



Type .110.0 equipped with Magnetic switches MIN and MAX, vent plug, drain valve and indicating scale .AVG3 with high-T isolation.



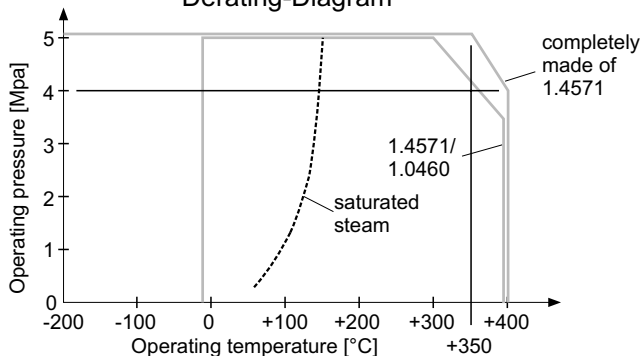
Field of Application

The magnetic level gauge is for indicating the level of low density liquids in any vessel via bypass. Simultaneously you can use level switches (740) or level sensors (745) mounted onto the reference vessel tube to signalling level limits or measure the level height by remote means.

General Data

Density, float Titanium: from 0,29 g/cm³
Precision for Interface or density: from ±0,01 g/cm³
Measuring range (=ME): single piece up to 5000 mm, above split construction, from 3000 mm holding bracket each 1500 mm
Measuring error: ±10 mm
Viscosity: max 1000 mPas
Display type: 710.AVG3
Connection: weld end (Standard), Flanges DIN and ANSI
Drain/vent: Cap (Standard), plug 1/2" NPT, as option 3/4" NPT, G1/2A, G3/4A Valve DN6, optional DN8, Flange stud DIN and ANSI and acc. to customer spec.
Material tube, stud, 1.4571 (Standard), ANSI-coded flanges, fixtures: Titanium, Hastelloy, etc., float: Titanium etc.
Weight: Basic 14 kg + 0,66 kg/100mm ME

Derating-Diagram



Design Data

Operating pressure: up to 5,2 MPa/300 lbs (see Derating-Diagram)
Temperature Media
Reference vessel cpl. 1.4571: -200 ... +400 °C
flanges 1.0460: -10 ... +400 °C (see Derating-Diagram)
Below -10 °C Indicating scale .AVG2 and below -20 °C add frost protection with 710.ISOL
In both cases preparation for insulation included.

Certificates

Pressure Vessel Directive (PED) 97/23/EG
EC-Type Examination Certificate: TÜV 03 ATEX 2190 Zone 0
Subject to alterations

Ordering no.

710.110.0 - XXX - XXXX - XXXXXXXX

Density, e.g.
054=0,54 g/cm³

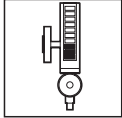
Center to center ME
in mm

Connections etc.
see sheet
710.VAR

PHÖNiX

Messtechnik GmbH
Salzschlirfer Straße 13
D-60386 Frankfurt/M.
Tel. +49/69/41 67 42 -20
Fax +49/69/41 67 42 - 29
sales@phoenix-mt.com
www.phoenix-mt.com



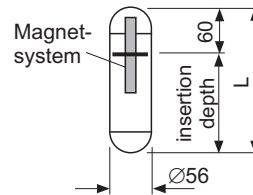


Details	Product group 710	
	Type 110.0	
	Sheet: 2/2	Revision: 4
	Date: 09/05	
Float, Vent, Drain and Connection		

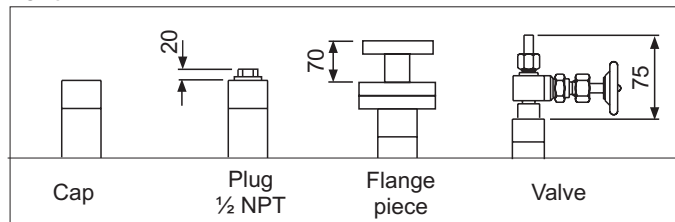
Float material Titanium, Ø56, PN40/CL300

Density range [g/cm ³]	Measure C [mm]	Total length L [mm]	Weight [g]	Part no
0,72 ... 0,67	220	210	235	BG1001109072
0,66 ... 0,58	260	250	260	BG1001109066
0,58 ... 0,54	300	290	290	BG1001109058
0,53 ... 0,51	350	340	327	BG1001109053
0,50 ... 0,49	380	370	352	BG1001109050
0,48 ... 0,46	430	420	388	BG1001109048
0,45 ... 0,44	490	480	431	BG1001109045
0,43 ... 0,40	590	580	505	BG1001109043
0,39 ... 0,37	710	700	590	BG1001109039
0,30 ... 0,29	760	750	493	BG1001109030
Interface float (individually designed ±0.01 g/cm ³)				BG1001109TRX

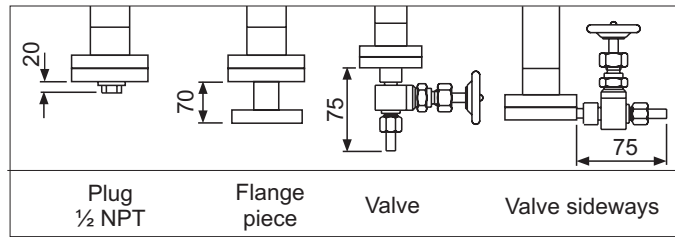
Density range corresponds to measuring error ±10 mm



Vent



Drain

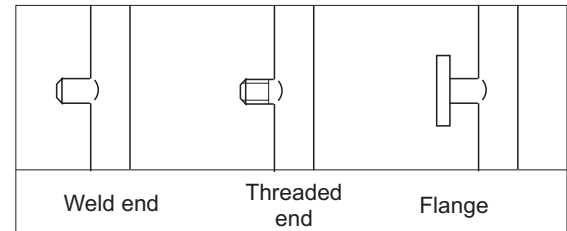


Design Data

Operating pressure: up to 5,2 MPa/300 lbs
(see Derating-Diagram for 1.4571)
Test pressure: Operating pressure x 1,3
Operating temperature: -200 ... +400 °C
(see Derating-Diagram for 1.4571)

Subject to alterations

Connections



Ordering no.

Accessories:

Device	Product group
Magnetic switch	740.XXXX
Level sensor	745.XXXX
Indicating scale	710.AVGX
Frost protection	710.PLEXI
Heating	710.HEAT

Spare parts:

Designation	Part no.
Float	s. Float table above
Indicating scale	710.AVGX
Sealing	0690077005VG
Fixing springs	3813000672
Align magnet	BG10XXXXMAKU

There may be any other customer specified connections, materials and special floats.

PHÖNIX

Messtechnik GmbH
Salzschlirfer Straße 13
D-60386 Frankfurt/M.
Tel. +49/69/41 67 42 -20
Fax +49/69/41 67 42 - 29
sales@phoenix-mt.com
www.phoenix-mt.com

